

Mae'r Cyngor yn ymgynghori ar y cynnig i weithredu cynllun rheoli traffig yn seiliedig ar y cynllun a ddangosir. Mae rhagor o fanylion am yr ymgynghoriad hwn ar gael yn [www.caerdydd.gov.uk/transportprojects](http://www.caerdydd.gov.uk/transportprojects) gan ddefnyddio'r ddolen 'ymgyngoriadau cyfredol'. Neu gallwch e-bostio [transportpolicy@caerdydd.gov.uk](mailto:transportpolicy@caerdydd.gov.uk) neu ffonio 029 2087 3354 i ofyn am gopi caled. Os hoffech wneud unrhyw sylwadau ynghylch y cynnig hwn, anfonwch e-bost aton ni cyn 02/12/2020

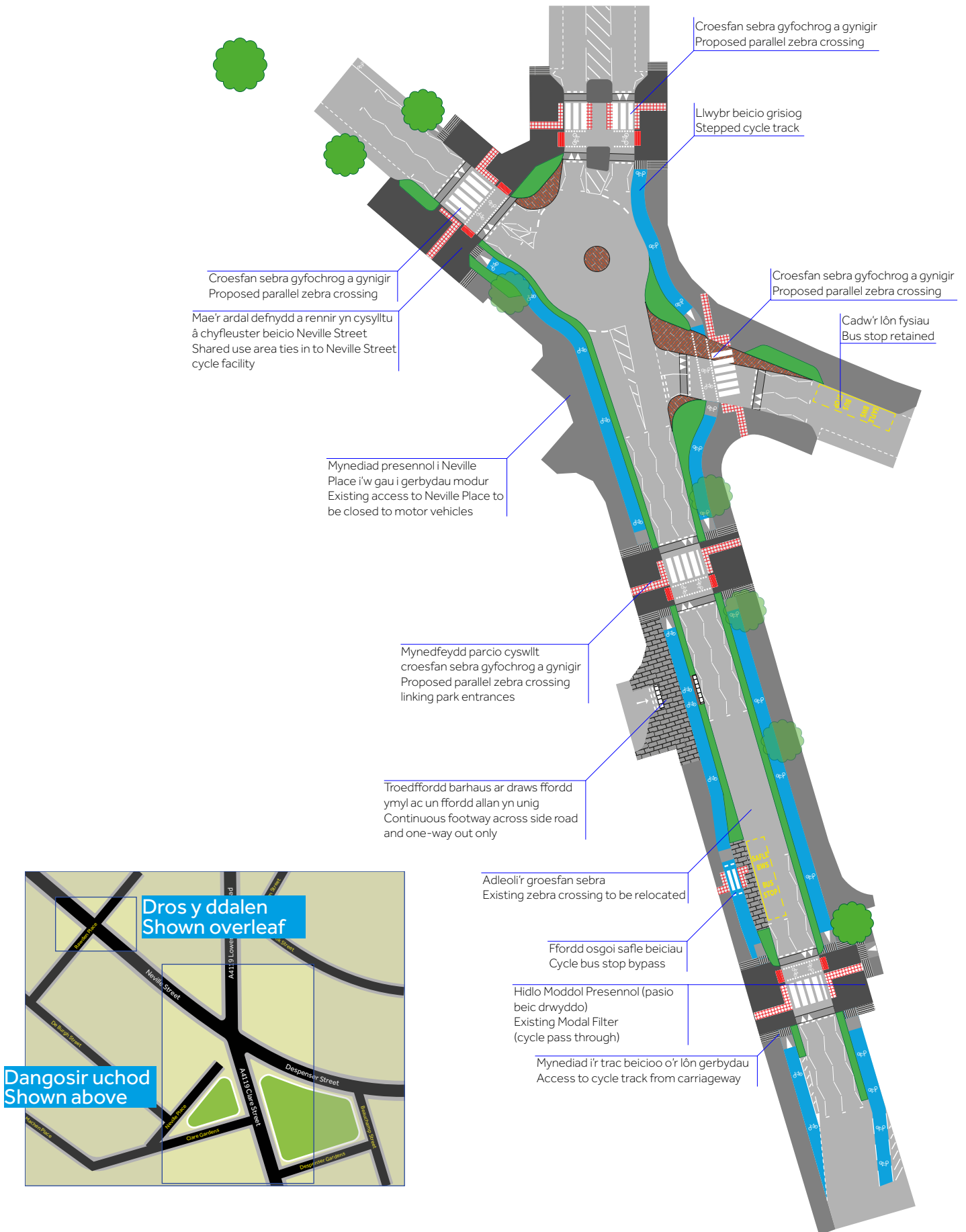
## Gweledigaeth Drafnidiaeth Caerdydd Cardiff's Transport Vision

# Gerddi Despenser Despenser Gardens



The Council is consulting on the proposal to implement a traffic management scheme based on the plan shown. Further details about this consultation are available at [www.cardiff.gov.uk/transportprojects](http://www.cardiff.gov.uk/transportprojects) using the 'current consultations' link. Alternatively, please email [transportpolicy@cardiff.gov.uk](mailto:transportpolicy@cardiff.gov.uk) to request a paper copy. If you would like to make any comments about this proposal please let us know by 02/12/2020.

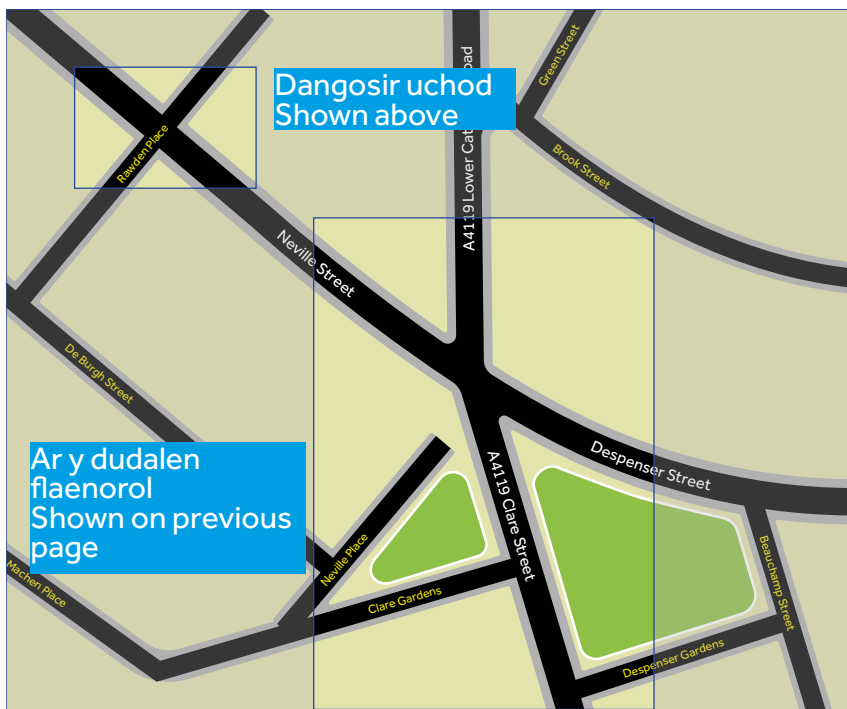
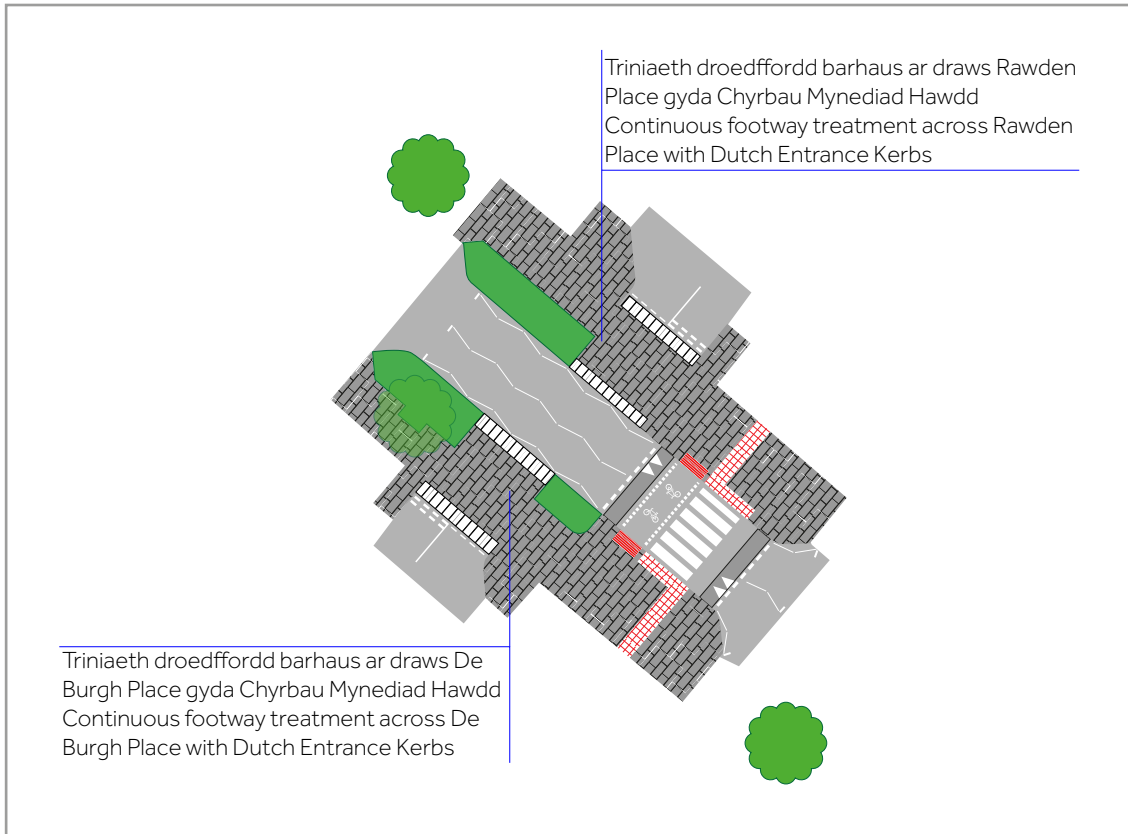
# Gerddi Despenser | Despenser Gardens



Mae'r Cyngor yn ymgynghori ar y cynnig i weithredu cynllun rheoli traffig yn seiliedig ar y cynllun. [transportpolicy@caerdydd.gov.uk](mailto:transportpolicy@caerdydd.gov.uk)

The Council is consulting on the proposal to implement a traffic management scheme based on the plan shown. [transportpolicy@cardiff.gov.uk](mailto:transportpolicy@cardiff.gov.uk)

# Gerddi Despenser | Despenser Gardens



- Ailarwynebu'r Lôn Gerbydau (Asffalt)  
Carriageway Resurfacing (Asphalt)
- Troedffordd (Asffalt)  
Footway (Asphalt)
- Ardal Cerddwyr/Beicio a rennir (Asffalt)  
Shared Pedestrian/Cycle Area (Asphalt)
- FTroedffordd (Arwyneb argraffnod)  
Footway (Imprint Surfacing)
- Llwybr Beicio (Gwahanedig)  
Cycle Track (Segregated)
- Draeniad Trefol Cynaliadwy  
Sustainable Urban Drainage
- Palmant Botymog (a Reolir)  
Tactile Paving (Controlled)
- Palmant Botymog (Nas Rheolir)  
Tactile Paving (Uncontrolled)
- Coeden  
Existing Tree

Mae'r Cyngor yn ymgynghori ar y cynnig i weithredu cynllun rheoli traffig yn seiliedig ar y cynllun. [transportpolicy@caerdydd.gov.uk](mailto:transportpolicy@caerdydd.gov.uk)

The Council is consulting on the proposal to implement a traffic management scheme based on the plan shown. [transportpolicy@cardiff.gov.uk](mailto:transportpolicy@cardiff.gov.uk)

# Gerddi Despenser | Despenser Gardens

Argraff arlunydd. Darlun yn Unig | Artist's impression. Visualisation Only



Argraff arlunydd. Darlun yn Unig | Artist's impression. Visualisation Only



# Gerddi Despenser | Despenser Gardens

## Systemau Draenio Cynaliadwy (SDCau)

Pan fydd glaw yn disgyn yn yr amgylchedd naturiol, mae nodweddion naturiol fel coed, planhigion, gweiriau, pridd, ynghyd ag afonydd a nentydd yn helpu i brosesu'r dŵr hwn ac mae hyn yn ffurfio rhan annatod o'r cylch dŵr. Yn yr amgylchedd adeiledig, caiff camau arferol y cylch dŵr eu llesteirio'n ddifrifol. Mae'r problemau sy'n deillio o'r difrod i'r cylch hwn yn cynnwys llifogydd, llygredd ac erydu. Mae'r dŵr hwn na all fynd i mewn i'r cylch dŵr naturiol yn rhoi straen ychwanegol ar y system garthffosiaeth. Mae SDCau yn ddull naturiol o reoli dŵr wyneb drwy greu 'safle prosesu dŵr bychan'.

### Manteision SDCau:

- Mesurau gostegu traffig naturiol.
- Improve the micro-climate.
- Gwella ansawdd yr aer.
- Dod â natur i'r amgylchedd trefol.

Gerddi Glaw yn enghreifftiau o SDCau.

### Lleoliadau plannu

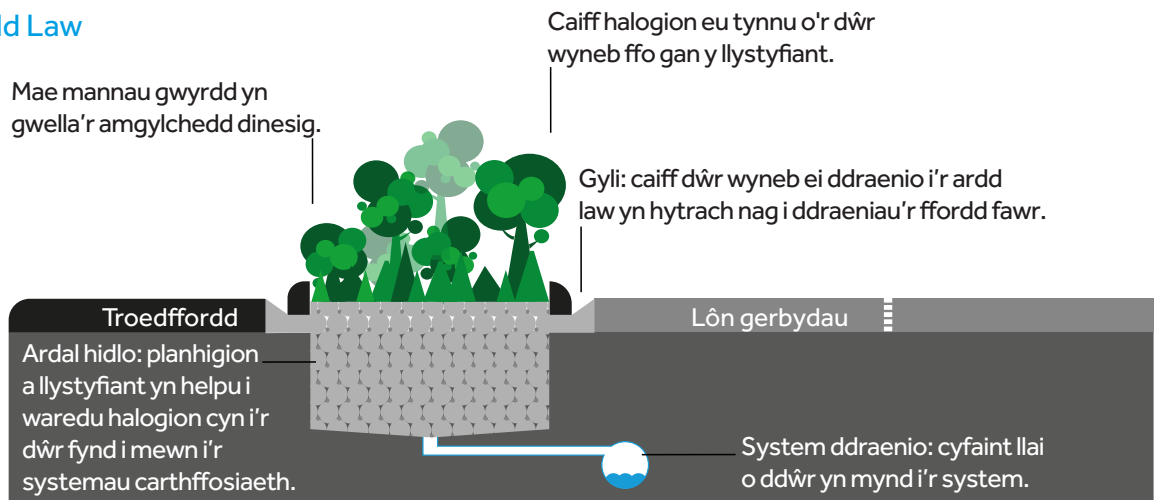
Mae canopïau sy'n ffurfio ar frig coed, yn dal y glaw, sy'n anweddu'n raddol, gan leihau'r dŵr sy'n cyrraedd yr arwyneb.



### Gerddi Glaw

Mae Gardd Glaw fel arfer yn ardal wedi ei phlannu, gydag amrywiaeth o rywogaethau, ac mae'r planhigion yn cyflawni sawl swyddogaeth allweddol; yn dal a glanhau dŵr glaw a dŵr wyneb ffo. Mae'r cyfaint is o ddŵr naill ai'n draenio i gwrs dŵr naturiol neu i'r system ddraenio.

### Trawstoriad Gardd Law



# Gerddi Despenser | Despenser Gardens

## Sustainable Drainage Systems (SuDS)

When rain falls in the natural environment, natural features such as trees, plants, grasses, earth along with rivers and streams; all help to process this water and this forms an integral part of the water cycle. In the built environment the normal stages of the water cycle are severely impeded. Problems resulting from this damaged cycle include flooding, pollution and issues of erosion. This water which cannot enter the natural water cycle puts additional strain on the sewer system. SuDS provide a natural approach to surface water management by creating a 'mini water processing site'.

### SuDS benefits:

- Natural traffic calming measures.
- Improve the micro-climate.
- Improve the air quality.
- Bring nature into the urban environment.

Rain Gardens are examples of SuDS.

### Planting Locations

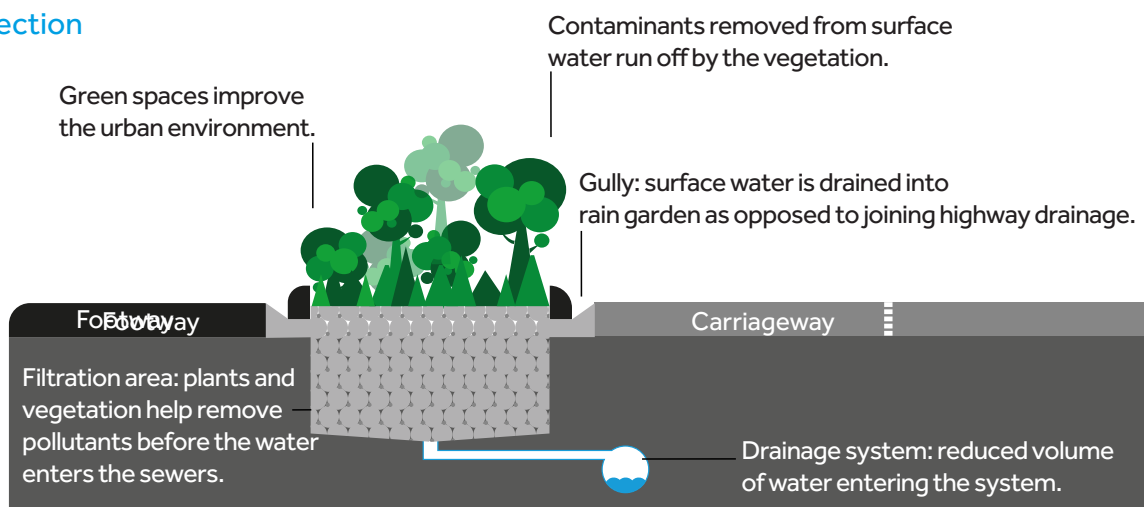
Canopies formed in the tree tops, catch the rain which slowly evaporates, reducing water reaching the surface.



### Rain Gardens

These are usually a planted area with a variety of species, the plants perform several key functions; intercepting and cleaning both rainwater and surface water runoff. The reduced water volume either drains to a natural watercourse or the drainage system.

### Rain Garden Cross Section



# Gerddi Despenser | Despenser Gardens

## Llwybr Beicio Grisiog: Unffordd

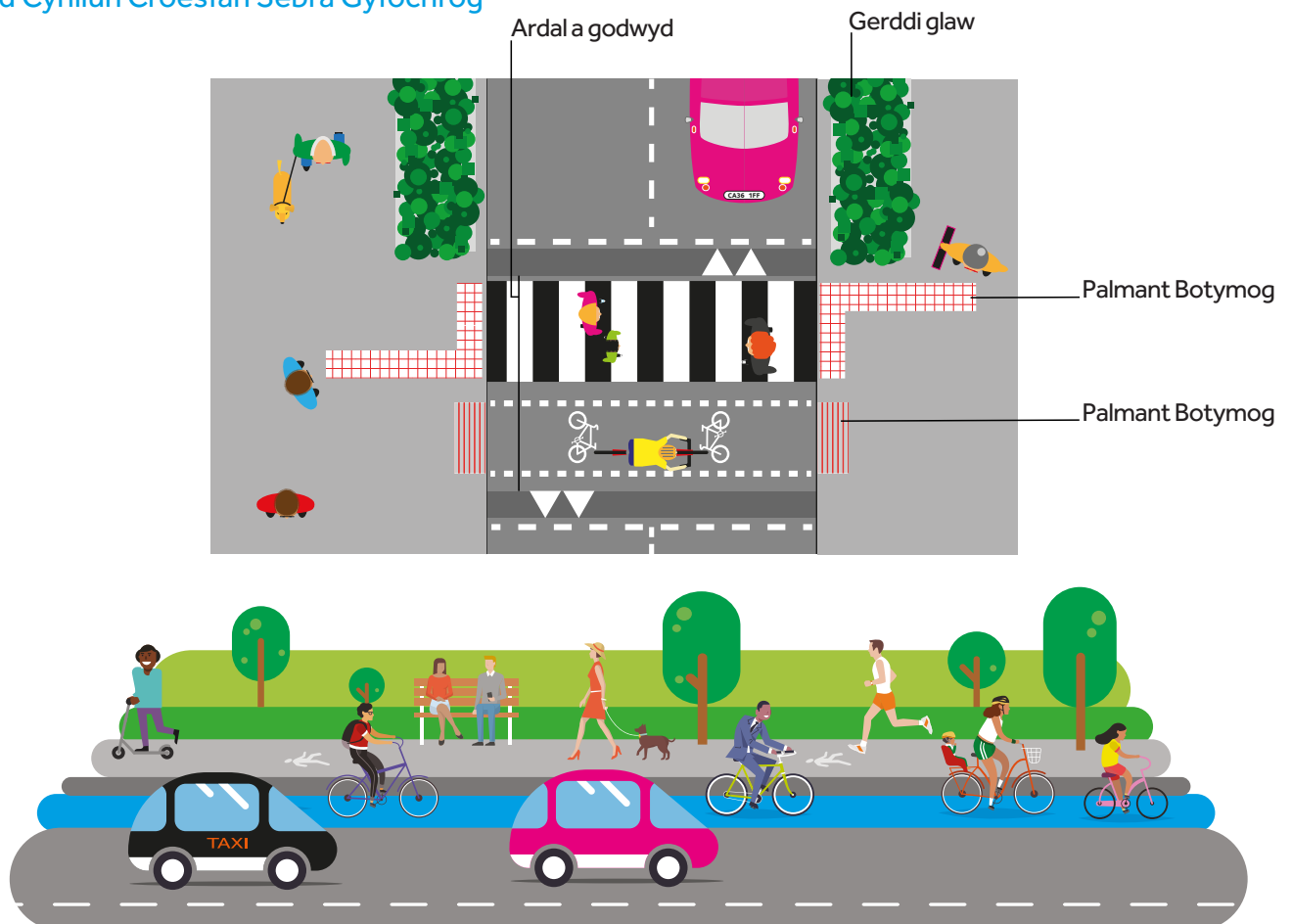
Trac beiciau unffordd sydd â beicwyr yn mynd i'r un cyfeiriad â'r lôn gerbydau gyfagos. Maent ar wahân i draffig moduron ac o gerddwyr.



## Croesfan Sebra Gyfochrog

Mae gan groesfan sebra gyfochrog ardal safonol o groesfan sebra ar gyfer cerddwyr, gyda lle ychwanegol wedi'i neilltuo ar gyfer beicwyr i groesi'r ffordd.

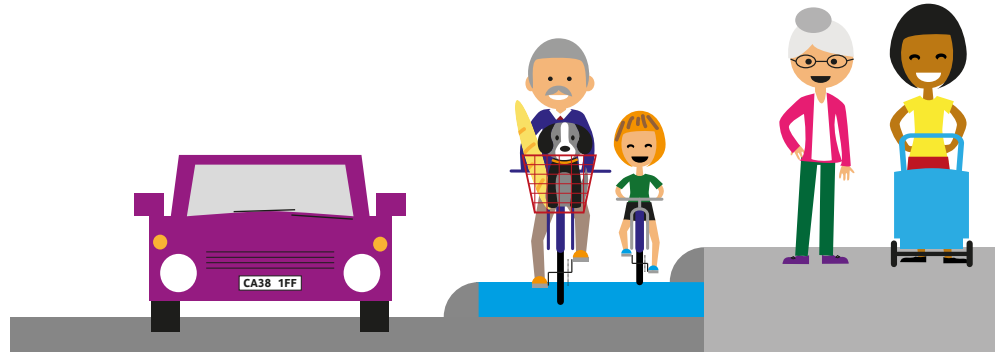
### Gweld Cynllun Croesfan Sebra Gyfochrog



# Gerddi Despenser | Despenser Gardens

## Stepped Cycle Track: One-way

A one-way cycle track has cyclists going in the same direction as the adjacent carriageway. They are separate from motorised traffic and from pedestrians.



## Parallel Zebra Crossings

A parallel zebra crossing has a standard section of a zebra crossing for pedestrians, with an additional space dedicated for cyclists to cross the carriageway.

### Parallel Zebra Crossing Plan View

